



ROWLEE
ORANGE - AUSTRALIA

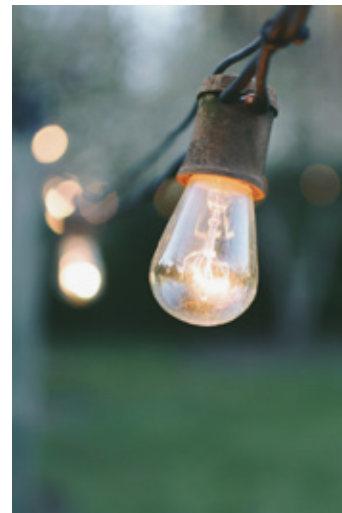


THANK YOU FOR CONSIDERING ROWLEE AS THE SETTING FOR YOUR UPCOMING WEDDING.

We look forward to hosting your celebration. We are sure you will find our garden & croquet lawn areas ideal for your ceremony and our stunning marquee is the perfect backdrop to any celebration.

The Rowlee property, located just outside the cosmopolitan township of Orange, is the perfect venue for a relaxed, stylish and intimate wedding in a stunning garden and vineyard setting. Our spaces are charming and ready for you to add your personal style for your special occasion.

Imagine taking your vows under the wisteria canopy, in the garden, amongst the vines or on our croquet lawn. Afterwards, leave your guests to have drinks and canapés in the garden while you have your photos taken in one of the many stunning locations around the property. Then let the celebrations begin under the cover of our stunning marquee.



ROWLEE GARDEN & MARQUEE WEDDING

50 - 200 PEOPLE

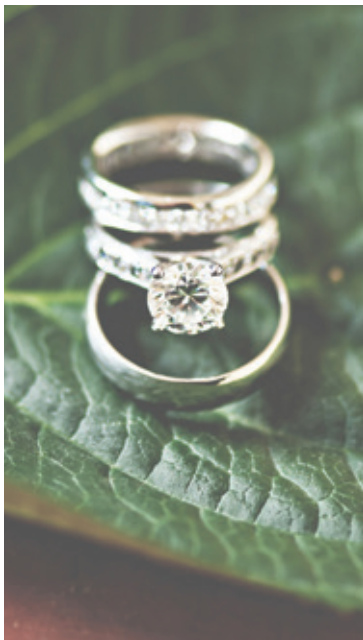
SIT DOWN OR CANAPÉ.

Smaller weddings and events of up to 50 guests can be hosted at The Stables which overlooks our wine garden.

Please enquire if you would like to host a smaller gathering.

For any event held at Rowlee three mandatory fees apply:

- Food package per person
- Beverage package per person and
- Rowlee's HIRE FEE (minimum of 100 people)



ROWLEE GARDEN & MARQUEE WEDDING

INCLUSIONS:

- * 3x (one hour duration) site visits, hosted by the Rowlee team (up to 4 people)
- * 8 hour venue hire with the use of the venue exclusively
- * Ceremony & drinks in the garden or croquet lawn area (if holding a non-church wedding), followed by the reception in the marquee area
- * Photo opportunities throughout the property including the garden & vineyard
- * Two nights accommodation in the bridal cottage, for two people, the night prior to the wedding & the night of the wedding
- * Tables, chairs and table linen
- * All glassware, cutlery, crockery and napery
- * Candles
- * Marquee and all weather surface
- * Fairy lighting throughout the marquee
- * Table for your cake and gift table
- * Outdoor casual seating and lounge area
- * Choice of food package
- * Choice of beverage package
- * Lawn games - quoits, connect 4, bocce and croquet
- * Two fire pits if required
- * High end portable toilets
- * PA system with 1 microphone



ROWLEE GARDEN & MARQUEE WEDDING

ADDITIONAL STYLING SERVICES

Rowlee works closely with Sarah from Bespoke Country Weddings for any additional styling, lighting, printing, floral and decorating requests. Sarah can be contacted directly and will invoice her services separately.

Sarah - (02) 6360 1934.

Rowlee also recommends Botanica Flora, Orange for your floral arrangements. Botanica Flora can be contacted directly and Libby will invoice her services separately.

Botanic Flora - (02) 6361 0857.



ROWLEE GARDEN & MARQUEE WEDDING

FOOD PACKAGES

FOOD OPTION 1 SAMPLE MENU

WANDERING APPETISERS

- * Marinated chicken bites
- * Frittata
- * Homemade sausage rolls

ALTERNATE MAIN COURSES

- * Roast boned and rolled leg of lamb with smashed potatoes, roasted ratatouille sauce and asparagus, or
- * Seared chicken with a medley of roasted vegetables on smashed potatoes with asparagus and herbed olive oil
- * Bread and butter

SERVED DESSERT

- * Wedding cake - chocolate mud cake, homemade vanilla ice cream and local strawberries
- * Self serve tea and locally roasted plunger coffee



ROWLEE GARDEN & MARQUEE WEDDING

FOOD PACKAGES

FOOD OPTION 2 SAMPLE MENU

WANDERING APPETISERS

- * Gourmet finger sandwiches
- * Platters of oysters
- * Chicken bites
- * Bite sized fish and chips
- * Frittata
- * 2 varieties of tartlets

ALTERNATE MAIN COURSES

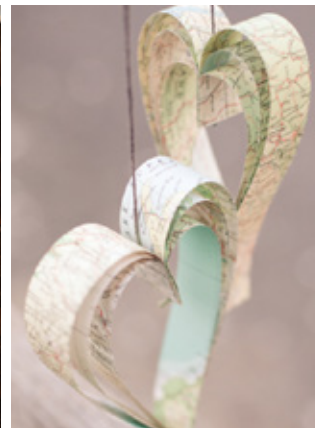
- * Roast boned and rolled leg of lamb with smashed potatoes, roasted ratatouille sauce and asparagus, or
- * Southern fried chicken with quinoa and roasted vegetable salad and pomegranate molasses dressing
- * Hominy bread and butter

SERVED DESSERT

- * Wedding cake - chocolate mud cake, homemade vanilla ice cream and local strawberries
- * Self serve tea and locally roasted plunger coffee

SUPPER

- * Local glazed ham with condiments and bread rolls, or
- * Cheese platter



ROWLEE GARDEN & MARQUEE WEDDING

FOOD PACKAGES

FOOD OPTION 3 SAMPLE MENU

CANAPÉS

- * Lemon and thyme chicken bites
- * Platters of oysters with two sauces
- * Frittata
- * Goat's curd, beetroot jam and rocket on melba toasts
- * Char grilled eggplant with avocado cream on melba toasts
- * Satay chicken sticks

SHARED PLATTERS

- * Seared salmon fillet on wilted leafy greens with sautéed mushrooms and roasted red capsicum sauce
- * Warm salad of rare beef with roasted beetroot, grilled asparagus, slow roasted tomatoes, shaved parmesan, aged balsamic vinegar and local extra virgin olive oil
- * Smashed dutch cream potatoes crisped with duck fat
- * Artisan bread and butter or local olive oil

DESSERT STATION

- * Wedding cake (for example, chocolate mud, croque-en-bouche)
- * Mini vanilla panna cotta with local strawberries
- * Platter of seasonal fruit
- * Self serve tea and local roasted plunger coffee

SUPPER

- * Local glazed ham with condiments and bread rolls, or
- * Cheese platter



ROWLEE GARDEN & MARQUEE WEDDING

BEVERAGE PACKAGES

DRINKS OPTION 1 SAMPLE LIST

1 sparkling wine + 2 white + 2 red wines + 2 full strength beers/cider + 1 light beer + non-alcoholic drinks

SPARKLING

- * Cuvée By Rowlee

WHITE WINES *(Choose 2)*

- * Rowlee Single Vineyard Riesling
- * Pinot Gris By Rowlee
- * Rowlee Single Vineyard Chardonnay

ROSÉ *(Substitute)*

- * Rosé By Rowlee

RED WINES *(Choose 2)*

- * Rowlee Single Vineyard Pinot Noir
- * Syrah By Rowlee
- * Cabernet By Rowlee

BEER AND/OR CIDER... SELECT 2X FULL STRENGTH & 1X LIGHT

- * James Boags Premium
- * Peroni Nastro Assurro
- * Corona
- * James Squire 150 Lashes
- * Local beer - Pioneer, Two Heads, Badlands
- * Small Acres Pear Cider
- * Small Acres Apple Cider
- * James Boags Premium Light
- * Peroni Leggera

NON-ALCOHOLIC OPTIONS INCLUDED

- * Santa Vittoria sparking mineral water
- * Assortment of soft drinks
- * Orange juice



ROWLEE GARDEN & MARQUEE WEDDING

BEVERAGE PACKAGES

DRINKS OPTION 2 SAMPLE LIST

1 sparkling wine + 2 whites + 2 reds + 2 full strength beers/cider + 1 light beer + non-alcoholic drinks

SPARKLING

- * Cuvée By Rowlee

WHITE WINES *(Select 2)*

- * Rowlee Single Vineyard Riesling
- * Pinot Gris By Rowlee
- * Rowlee Single Vineyard Arneis
- * Rowlee Single Vineyard Fumé Blanc
- * Rowlee Single Vineyard Chardonnay

ROSÉ *(Substitute)*

- * Rosé By Rowlee

RED *(Select 2)*

- * Rowlee Single Vineyard Pinot Noir
- * Rowlee Single Vineyard Nebbiolo
- * Syrah By Rowlee
- * Cabernet By Rowlee

BEER AND/OR CIDER... SELECT 2X FULL STRENGTH & 1X LIGHT

- * James Boags Premium
- * Peroni Nastro Assurro
- * Corona
- * James Squire 150 Lashes
- * Local beer - Pioneer, Two Heads, Badlands
- * Small Acres Pear Cider
- * Small Acres Apple

- * James Boags Premium Light
- * Peroni Leggera

NON-ALCOHOLIC OPTIONS INCLUDED

- * Santa Vittoria sparking mineral water
- * Assortment of soft drinks
- * Orange juice



ROWLEE GARDEN & MARQUEE WEDDING

BEVERAGE PACKAGES

DRINKS OPTION 3 SAMPLE LIST

1 sparkling wine + 2 whites + 2 reds + 2 full strength beers/cider + 1 light beer + non-alcoholic drinks

SPARKLING *(Select 1)*

- * Cuvée By Rowlee

WHITE WINES *(Select 2)*

- * Rowlee Single Vineyard Riesling
- * Pinot Gris *By Rowlee*
- * Rowlee Single Vineyard Arneis
- * Rowlee Single Vineyard Fumé Blanc
- * Rowlee Single Vineyard Chardonnay

ROSÉ *(Substitute)*

- * Rosé *By Rowlee*

RED *(Select 2)*

- * Rowlee Single Vineyard Pinot Noir
- * Rowlee R Series Pinot Noir
- * Rowlee Single Vineyard Nebbiolo
- * Rowlee R Series Nebbiolo

BEER AND/OR CIDER... SELECT 2X FULL STRENGTH & 1X LIGHT

- * James Boags Premium
 - * Peroni Nastro Assurro
 - * Corona
 - * James Squire 150 Lashes
 - * Local beer - Pioneer, Two Heads, Badlands
 - * Small Acres Pear Cider
 - * Small Acres Apple Cider
-
- * James Boags Premium Light
 - * Peroni Leggera

NON-ALCOHOLIC OPTIONS INCLUDED

- * Santa Vittoria sparking mineral water
- * Assortment of soft drinks
- * Orange juice
- * Coffee and Tea



CONTRACT FOR HIRE OF PREMISES TERMS & CONDITIONS

Rowlee Wines Pty Limited ("Rowlee") ABN 66 166 372 069 is the Proprietor of the Rowlee wines vineyard, cellar door, cottage and marquee. The Premises are Rowlee Wines, 19 Lake Canobolas Road, Nashdale New South Wales 2800. This Contract sets out the Terms & Conditions for the hire of the Premises and is made between Rowlee and the Hirer.

* CAPACITY

Rowlee can host events up to 200 guests in the garden and marquee area.

* DURATION

Rowlee is licensed until midnight on Friday and Saturday evenings - no events can go past this time.

Amplification of music must conclude by 11pm.

The ROWLEE GARDEN AND MARQUEE VENUE PACKAGE has a duration of 8 hours.

* EVENT DAYS

Rowlee is available for events 7 days a week. For public holiday days please contact us for further information as additional fees apply.

* ACCESS

Access to Rowlee will be granted at 9am the day prior to your event in the garden and marquee area. Please ensure all contractors have left the property by 5pm the day prior to the event and, if needed again, return only after 8am on the day of the event.

Check out time the day after the event is midday. Please ensure all your property has been removed from Rowlee by this time. We understand some contractors, such as the stylist, may need to come later than this and they can liaise with us directly for access to the property.



CONTRACT FOR HIRE OF PREMISES TERMS & CONDITIONS

* ROWLEE SITE VISITS

Rowlee is an operational cellar door and vineyard and as such we can offer you three site visits at 1 hour maximum per visit, accompanied by a Rowlee team member. Please give two days notice for site visits. Any additional site visits will be charged by the hour at \$60 per hour. Site visits are granted for the bride and/or groom and 2 guests.

* DEPOSIT, PAYMENT TERMS + AGREEMENT FORM

To confirm your booking we require an initial security deposit (bond) of \$3,000.00 (NOT credited towards the final account and returned after the function once an assessment of the condition of the premises has been completed). This deposit is required to confirm your reservation and, once paid, reflects your recognition and agreement with the terms and conditions outlined in this package. At the same time we also require a signed and completed copy of our Security and Agreement Form. Rowlee can not guarantee any dates for your events until Rowlee receive the deposit payment and a completed Security and Agreement Form. A copy of the deposit receipt and the form should be emailed to info@rowleewines.com.au.

50% of the minimum spend is due 60 days before your event (credited towards the final account).

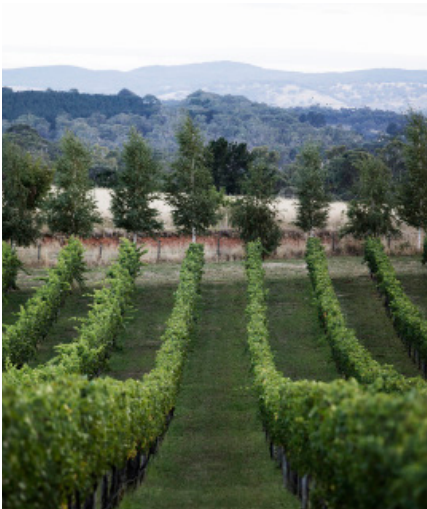
Final numbers for food and drink packages is due 14 days prior to the event. This will then determine your final package cost, which will be confirmed by Rowlee. Full payment for your event, as dictated by your final numbers, is due 14 days prior to the event date. No alterations to final numbers can be made after this.

Payment by cash, direct debit or bank cheque incurs no surcharge.

Direct deposit should be made in accordance with the following details:-

Account name: Rowlee Wines BSB: 112 879 Account Number: 439580371

If paying by direct debit, please include the Hirer's name as reference.





CONTRACT FOR HIRE OF PREMISES TERMS & CONDITIONS

* ROWLEE HIRE FEE

For this package a HIRE FEE of minimum charged based on 100 people. This includes exclusive use of the garden, cottage accommodation and marquee event space at Rowlee, cost of the team and everything outlined in the ROWLEE GARDEN AND MARQUEE VENUE PACKAGE. This does not include food or beverage. This fee is charged for ANY style party at Rowlee. This fee is included towards your minimum spend. A final invoice will be provided when you confirm your guest numbers. Additional styling services, cars, flowers are contracted separately and invoiced directly to you by that supplier.

* MANDATORY FEES

For any event held at Rowlee three mandatory fees apply. Food package per person, beverage package per person and Rowlee's HIRE FEE.

* FINAL NUMBERS & MENU SELECTION

The guaranteed number of guests attending the event is required at least 14 days prior to the event for catering and teaming needs. Once final numbers are given this will be taken as confirmed. The final invoice will be issued to you 14 days prior to your event. Catering will be provided for this number and this will be the minimum charged irrespective of last minute cancellations. Guest cancellations cannot be credited towards other elements of your event including additional styling. All final food + beverage selections are also required at least 28 days prior to the event. All food is subject to seasonal change, however notification will be given for this.

* MINIMUM SPEND

A minimum spend (inclusive of food and beverage packages) is required for any wedding held at Rowlee. These numbers are a guide and will change within this range, dependant on number of guests confirmed. Additional flowers, styling service etc are invoiced separately by those independent suppliers, directly to the wedding party. Rowlee's minimum spend includes everything outlined in the ROWLEE GARDEN AND MARQUEE VENUE PACKAGE. Should your guest numbers fall short of the minimum spend, the full minimum tariff will be charged.

CONTRACT FOR HIRE OF PREMISES TERMS & CONDITIONS

* CANCELLATION POLICY

If it is necessary to cancel or postpone your event, the following must apply: All cancellations or change of date made incur a loss of full deposit. No credits will be given for change of date. Any cancellation made 60 days or less prior to your event, will incur a loss of 50% of the minimum spend. All cancellations made within 14 days of your event will incur a loss of all monies due as stated on your invoice. Cancellations must be confirmed to Rowlee in writing. Due to unforeseen circumstances, accidents, extreme weather or unexpected environmental conditions, Rowlee reserves the right to cancel any booking and refund any deposit or payments made.

* ADDITIONAL (SUPPLIER) MEALS

Meals for two entertainers and one photographer are included in our catering package. This will include a main sit down meal in their break, and non-alcoholic drinks throughout event. It does not include canapés.

* UNDER 10'S MEALS

Guests under 10 years old are charged half price for their food package and drinks are complimentary. Guests under 2 years old are not catered for.

* PRICES

Rowlee makes every effort to maintain prices, however they may be subject to alteration prior to your event due to food and beverage price increases. However we will guarantee that any increase will not exceed 10% of your chosen package. All prices are inclusive of GST.

* SECURITY

Organisers and/or hosts are financially liable for any damage sustained, or loss incurred to Rowlee property, fixtures or fittings, through their own actions, those of their guests, sub-contractors and contractors, this

includes the cottage accommodation. Credit card details are required at the time of your booking to cover any damages that may occur. The Security + Agreement Form will be supplied for you to confirm your booking. Credit Card details are the only form of security accepted.

* ALCOHOL AND DECORUM

Rowlee is a licensed venue. Strictly no BYO beverages are permitted. It is your responsibility to ensure the orderly conduct of your guests. All beverages are subject to seasonal change, however notification will be given for this.

* DUE CARE

Whilst our team will take care, no responsibility will be taken for damage or loss of goods, equipment or merchandise left on the premises prior to, during or after the event. The following items are not permitted at your event: wax candles, confetti, rice, streamer poppers, flower petals, or sequin type scatters eg. stars, hearts.

* CLEANING FEE

A cleaning fee will be charged, at the discretion of Rowlee management, should the premises be left in an unacceptable state. This includes the cottage accommodation.

* COTTAGE ACCOMMODATION

Rowlee's GARDEN AND MARQUEE VENUE PACKAGE includes 2 nights accommodation in our boutique on-site accommodation. These nights can be redeemed the night before the event and the night of the event. There are strictly no after parties tolerated in the cottage accommodation and the Police will be phoned if this is violated and you will be evicted. The accommodation at all times is to be used for only 2 guests. Exceptions are made for the groom or bridal party on the day of their event for final dressing and photos.

CONTRACT FOR HIRE OF PREMISES TERMS & CONDITIONS

* DECOR + STYLING

All major furniture items, fixtures + fittings must remain as styled and positioned by Rowlee and any external contractors such as florists and stylists. Rowlee can recommend Sarah at Bespoke Country Weddings, Orange for any additional styling services to suit your party or event. Please contact her directly to discover her extensive options.

* EQUIPMENT HIRE

Rowlee has established relationships with professional hire companies and recommended suppliers to look after all your equipment needs and services. Please contact us for a our list.

* EXTERNAL CONTRACTORS

All external contractors and hire must be advised to Rowlee 14 days prior to your event and are subject to approval by management. Rowlee can apply limits or time restrictions on the contractors.

* ENTERTAINMENT/MUSIC

Rowlee is happy to offer suggestions for your music entertainment. All equipment must be supplied by your hired band or DJ as Rowlee does not have facilities for this. Whilst we understand that you are wanting music at your event, Rowlee reserves the right to monitor the sound levels as needed, in accordance with NSW Legislation "Protection of the Environment Operations (Noise Control) Regulations 2017". No subwoofers are to be used at the venue and all music must cease at 11pm.

* DECORATIONS

Nothing is to be nailed, screwed, blue-tacked or adhered in any way to any wall, door or other part of Rowlee's property or the marquee. All decorations must be approved by the Rowlee prior to the reception.

* TASTINGS

Rowlee can not offer food tastings but tastings of the Rowlee wine range can be arranged within your allocated three site visits. Any other local beverages you wish to taste beforehand can be purchased directly from those suppliers or at the local Kelly's bottle shop on Moulder Street, Orange.

* SMOKING

In accordance with the NSW Health and Hygiene laws, smoking is not prohibited within Rowlee's marquee and surrounding areas. Guests will be directed to a designated smoking area. Please place butts in the bins provided.

* GRATUITY

Gratuities are discretionary and are appreciated by the Rowlee team.

* INDEMNITY

Rowlee guarantees the use of the freshest ingredients and ensures that food is prepared under the most hygienic conditions. However no liability is taken by Rowlee, and it's preferred caterer's, for any latent defect in any product used.

* FOOD ALLERGIES

Please advise details of guests with food allergies when confirming final numbers. Whilst the caterers will do their utmost to ensure the said allergen is not in the meals prepared, we cannot guarantee it as our caterers do use a wide variety of ingredients on a daily basis.

* FIREWORKS

Rowlee does not allow fireworks on site. Unfortunately we can't make exceptions due livestock in the immediate vicinity.



CONTRACT FOR HIRE OF PREMISES TERMS & CONDITIONS

* **PUBLIC LIABILITY INSURANCE**

Rowlee does hold Public Liability Insurance however all external suppliers will be required to have their own Public Liability Insurance. Rowlee's Public Liability Insurance is very specific to our venue and fit out. No harm or damage to guests caused by any external supplier equipment, styling decor, furniture or goods are covered by Rowlee.

* **PARKING**

All guest parking is situated adjacent to the cellar door however Rowlee recommend using a bus service for the convenient and safe transportation of your guests. These buses can arrive and depart from the cellar door car parking area, accessed by our driveway off Lake Canobolas Road.

* **GST**

All prices quoted are inclusive of the Australian Goods and Services Tax (GST).

* **DELIVERIES**


Items being delivered on your behalf must be boxed and labelled with the function name clearly marked. Please advise delivery times to Rowlee. Although all care is taken no responsibility is accepted for loss or damaged goods.



ROWLEE'S PREFERRED EVENT SUPPLIERS

BESPOKE COUNTRY WEDDINGS

Styling props & print

Sarah Powell
www.bespokecountryweddings.com.au
hello@bespokecountryweddings.com.au
(02) 6360 1934
 [bespokecountryweddings](#)


ONA JANZEN

Photographer

www.onajanzen.com.au
ona@onajanzen.com.au
0423 143 182

BOTANICA FLORA

Floristry

www.botanicaflora.com.au
info@botanicaflora.com.au
(02) 6361 0857
 [botanicaflora](#)


PARKER'S WEDDING CARS

Transport

www.parkersweddingcars.com.au
enquiries@parkersweddingcars.com.au
0411 152 601

HELICRUZ

Transport

www.helicruz.com.au
info@helicruz.com.au
(02) 6363 5650
 [craigy_helicruz](#)

BUSES

Cooks Bus Service

(02) 6365 2425

Selwoods Coaches

(02) 6362 7963

Apple City Tours

(02) 6365 8395

THE BYNG STREET BOUTIQUE HOTEL

Accommodation

62 Byng Street Orange
www.byngstreethotel.com.au

DE RUISSE SUITES

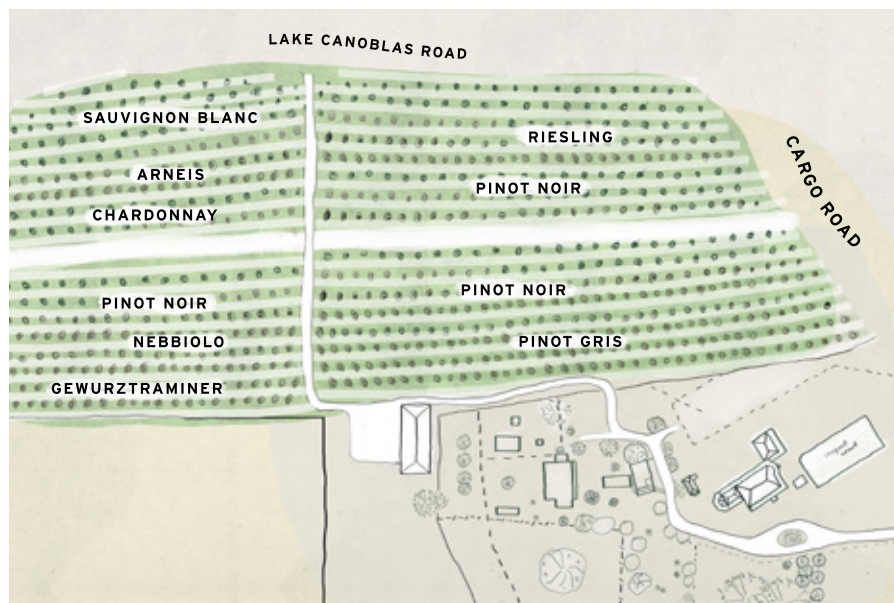
Accommodation

72 Hill Street Orange
www.derussiehotels.com.au

LANDSDOWNE HOUSE (DE RUISSE GROUP)

Accommodation

72 Byng Street Orange
www.derussiehotels.com.au/lansdowne



19 Lake Canobolas Road . Orange NSW 2800



(02) 6365 3047

info@rowleewines.com.au

ROWLEEWINES.COM.AU

ROWLEE
ORANGE - AUSTRALIA